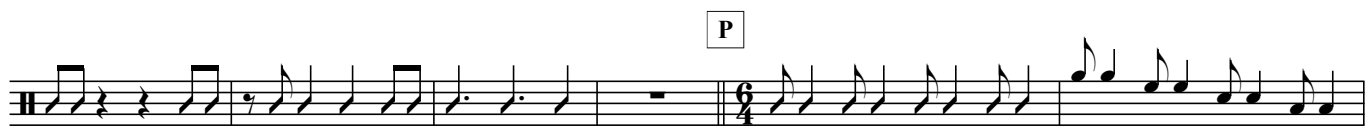
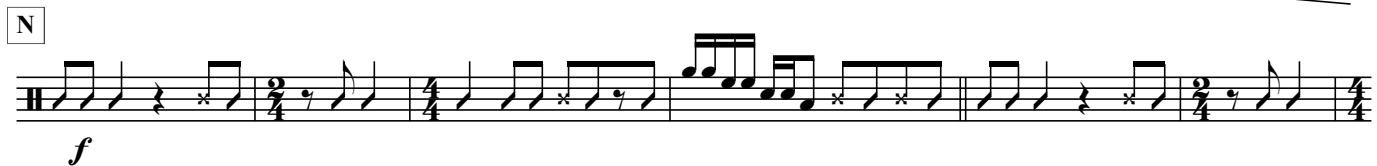
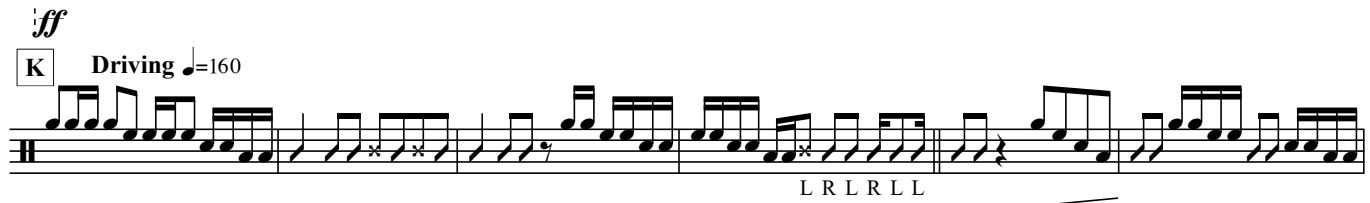
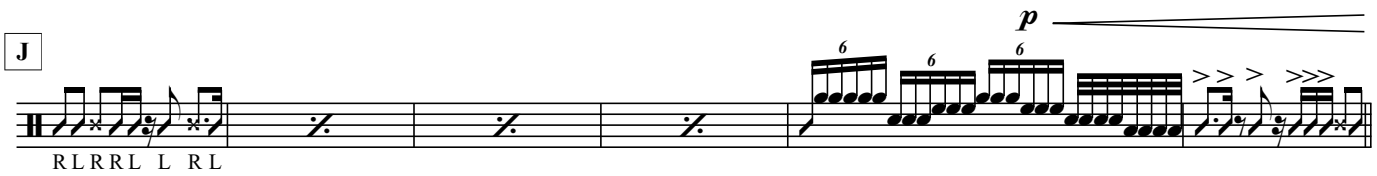


Musical score for "The Rose Tree" by Robert Schumann, Op. 15, No. 1. The score is for a single melodic line in treble clef, 3/4 time. It features various dynamics (p, mp, f, fp), articulations (accents, slurs), and fingerings (3, 6). The piece is divided into sections A, B, and C. The tempo is marked as quarter note = 160. The key signature has one sharp (F#).

Musical score for "The Firebird" by Igor Stravinsky, featuring a piano and a solo violin. The score is in 2/4 time and includes various musical notations such as dynamics (*f*, *mf*, *p*), articulation (>), and fingerings (6, 9, 3). It also includes a key signature change to E major and a tempo change to 160 bpm.



The image displays a page of musical notation for a piano exercise, consisting of ten staves. The notation includes various musical symbols such as notes, rests, and dynamic markings. The exercise is divided into sections labeled Q, R, S, T, and U. The key signature is one sharp (F#) and the time signature is 4/4.

Section Q: The first staff begins with a dynamic marking of *mf* and a tempo marking of *2*. It features a series of eighth notes and quarter notes, with a dynamic change to *f* in the second measure.

Section R: The second staff starts with a dynamic marking of *p* and a tempo marking of *f*. It includes a series of eighth notes and quarter notes, with a dynamic change to *f* in the second measure. The staff is marked with 'R' and 'L' below the notes.

Section S: The third staff begins with a dynamic marking of *f* and a tempo marking of *f*. It features a series of eighth notes and quarter notes, with a dynamic change to *f* in the second measure. The staff is marked with 'R' and 'L' below the notes.

Section T: The fourth staff starts with a dynamic marking of *f* and a tempo marking of *f*. It includes a series of eighth notes and quarter notes, with a dynamic change to *f* in the second measure. The staff is marked with 'R' and 'L' below the notes.

Section U: The fifth staff begins with a dynamic marking of *f* and a tempo marking of *f*. It features a series of eighth notes and quarter notes, with a dynamic change to *f* in the second measure. The staff is marked with 'R' and 'L' below the notes.

The notation includes various musical symbols such as notes, rests, and dynamic markings. The exercise is divided into sections labeled Q, R, S, T, and U. The key signature is one sharp (F#) and the time signature is 4/4.